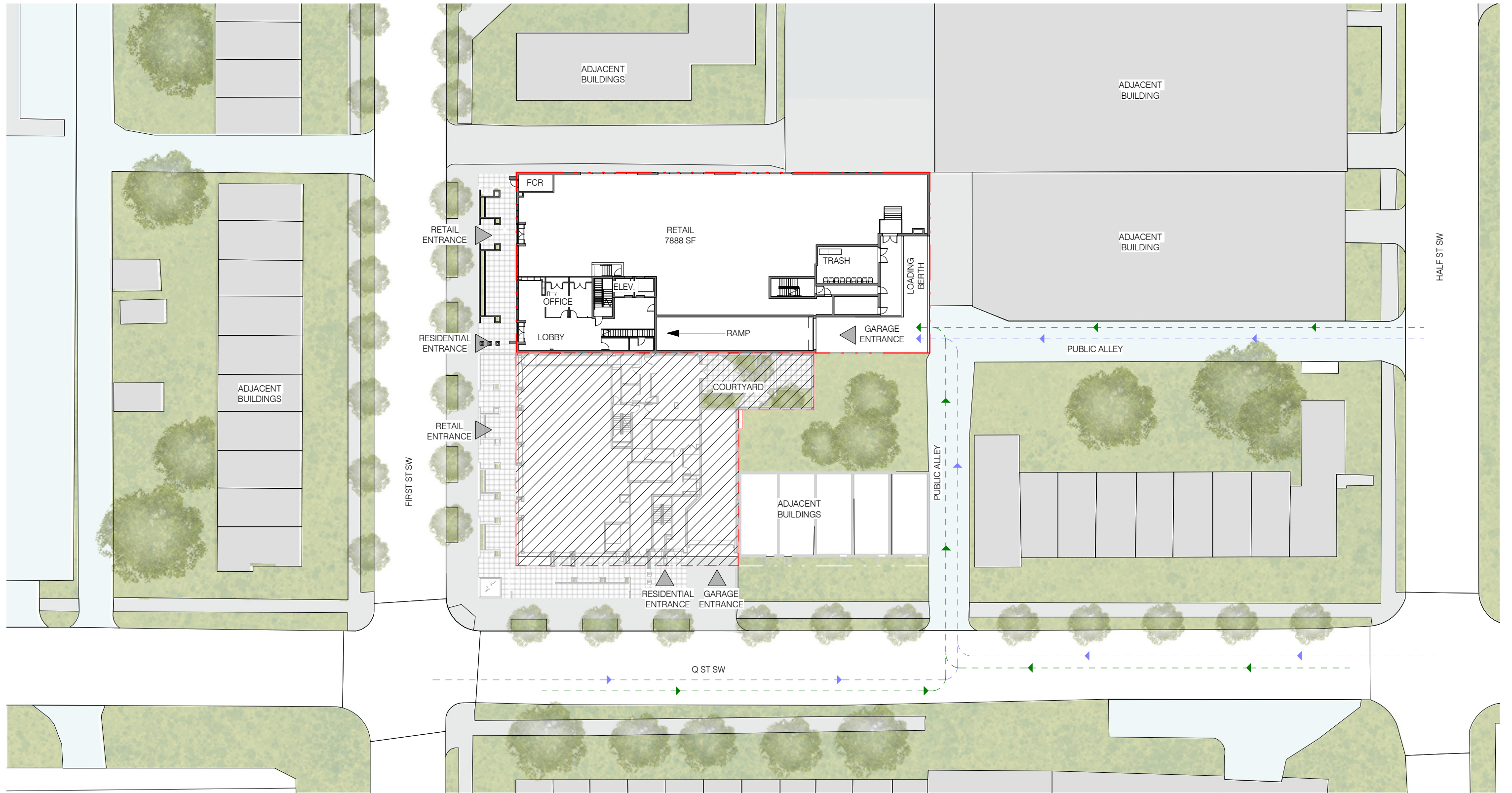


# EXHIBIT D

2 of 3



VEHICULAR ENTRY/EXIT - - - - - →  
 LOADING ENTRY/EXIT - - - - - →

# 1530 FIRST ST. S.W.

## VEHICULAR CIRCULATION | A-09

1530 FIRST ST. S.W. WASHINGTON DC 20024

Square: 0656 Lot No: 0053 Zone: CG-4



PGN ARCHITECTS, PLLC  
 210 7th Street SE - Suite 201  
 Washington, DC 20003  
 202.822.5995 (P); 202.822.0908 (F)



TM ASSOCIATES INC.  
 1375 Piccard Drive, Suite 150  
 Rockville, Maryland 20850  
 240.683.0300 (P); 240.428.7636 (F)

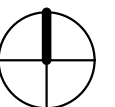
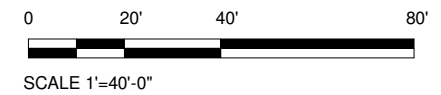
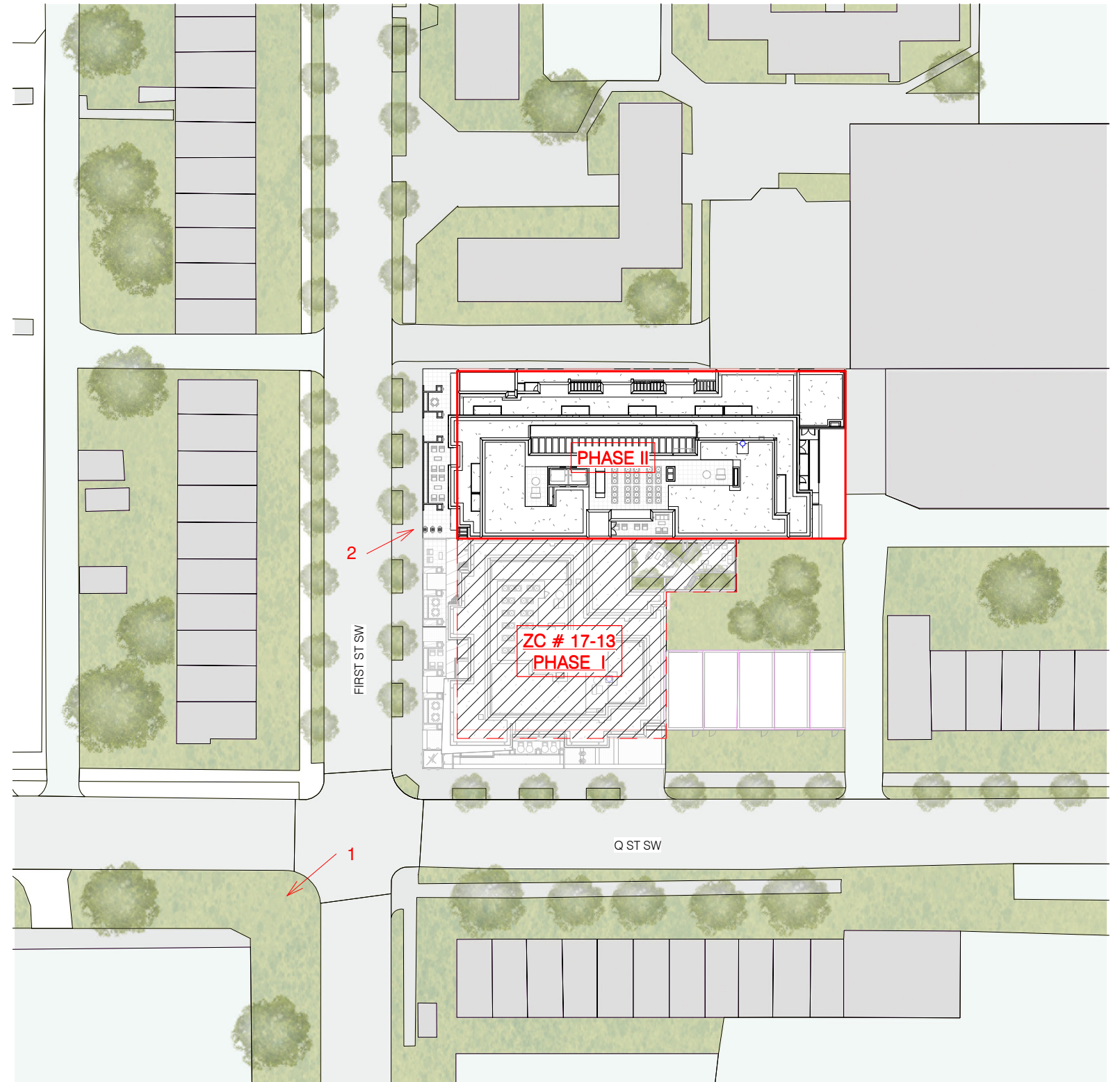
08/06/2018



1



2



1530 FIRST ST. S.W.

1530 FIRST ST. S.W. WASHINGTON DC 20024

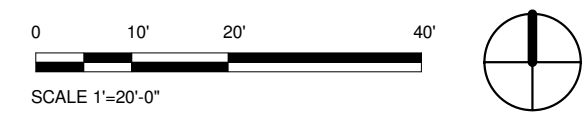
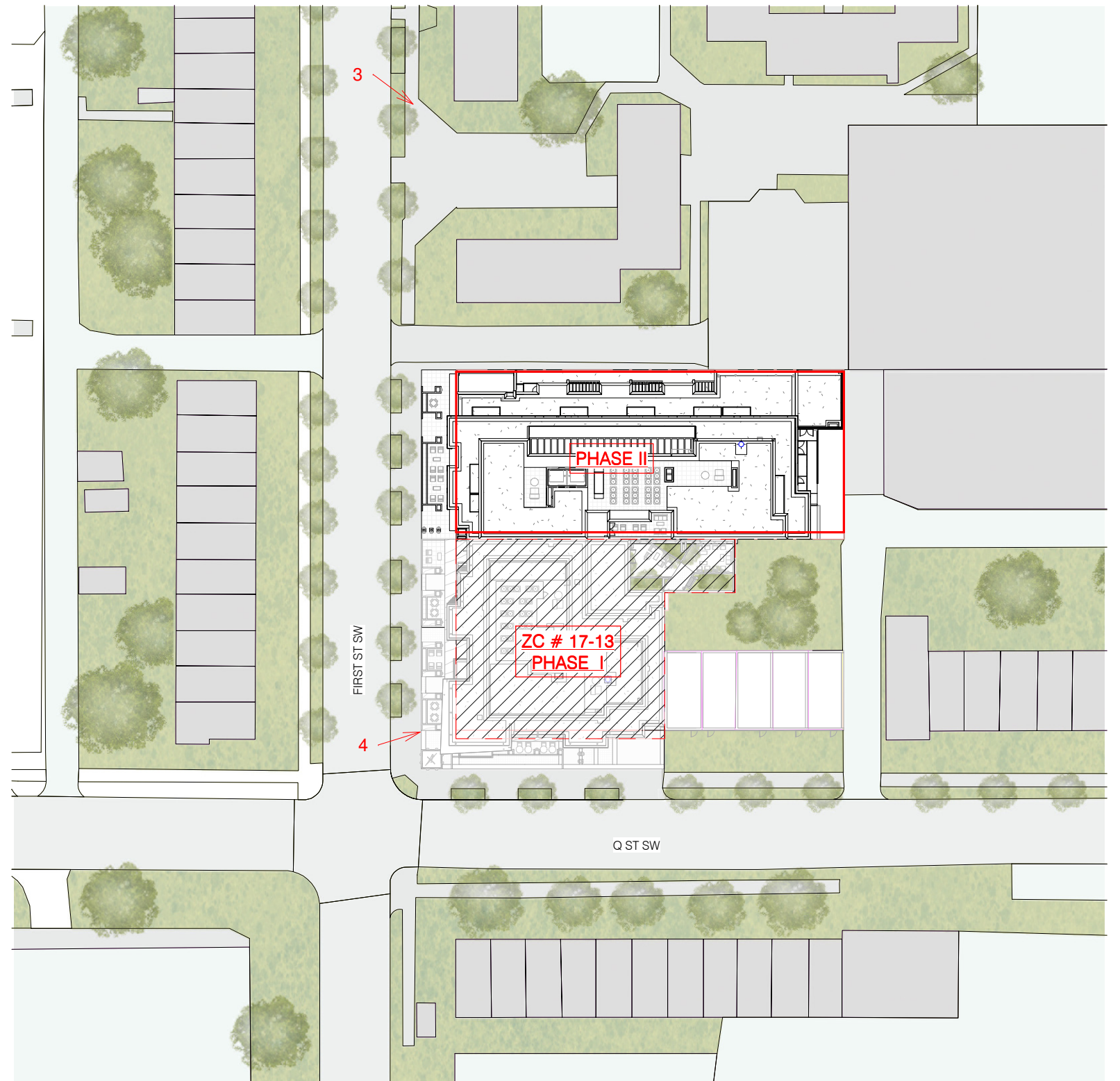
Square: 0656 Lot No: 0053 Zone: CG-4



PGN ARCHITECTS, PLLC  
210 7th Street SE - Suite 201  
Washington, DC 20003  
202.822.5995 (P); 202.822.0908 (F)



TM ASSOCIATES INC.  
1375 Piccard Drive, Suite 150  
Rockville, Maryland 20850  
240.683.0300 (P); 240.428.7636 (F)



1530 FIRST ST. S.W.

1530 FIRST ST. S.W. WASHINGTON DC 20024

Square: 0656 Lot No: 0053 Zone: CG-4



PGN ARCHITECTS, PLLC  
210 7th Street SE - Suite 201  
Washington, DC 20003  
202.822.5995 (P); 202.822.0908 (F)



TM ASSOCIATES INC.  
1375 Piccard Drive, Suite 150  
Rockville, Maryland 20850  
240.683.0300 (P); 240.428.7636 (F)



1530 FIRST ST. S.W.

PERSPECTIVE VIEW | A-12

1530 FIRST ST. S.W. WASHINGTON DC 20024

Square: 0656 Lot No: 0053 Zone: CG-4



PGN ARCHITECTS, PLLC  
210 7th Street SE - Suite 201  
Washington, DC 20003  
202.822.5995 (P); 202.822.0908 (F)



TM ASSOCIATES INC.  
1375 Piccard Drive, Suite 150  
Rockville, Maryland 20850  
240.683.0300 (P); 240.428.7636 (F)

08/06/2018



1530 FIRST ST. S.W.

PERSPECTIVE VIEW | A-13

1530 FIRST ST. S.W. WASHINGTON DC 20024

Square: 0656 Lot No: 0053 Zone: CG-4



PGN ARCHITECTS, PLLC  
210 7th Street SE - Suite 201  
Washington, DC 20003  
202.822.5995 (P); 202.822.0908 (F)



TM ASSOCIATES INC.  
1375 Piccard Drive, Suite 150  
Rockville, Maryland 20850  
240.683.0300 (P); 240.428.7636 (F)

08/06/2018



1530 FIRST ST. S.W.

PERSPECTIVE VIEW | A-14

1530 FIRST ST. S.W. WASHINGTON DC 20024

Square: 0656 Lot No: 0053 Zone: CG-4



PGN ARCHITECTS, PLLC  
210 7th Street SE - Suite 201  
Washington, DC 20003  
202.822.5995 (P); 202.822.0908 (F)



TM ASSOCIATES INC.  
1375 Piccard Drive, Suite 150  
Rockville, Maryland 20850  
240.683.0300 (P); 240.428.7636 (F)

08/06/2018



1530 FIRST ST. S.W.

1530 FIRST ST. S.W. WASHINGTON DC 20024

Square: 0656 Lot No: 0053 Zone: CG-4



PGN ARCHITECTS, PLLC  
210 7th Street SE - Suite 201  
Washington, DC 20003  
202.822.5995 (P); 202.822.0908 (F)



TM ASSOCIATES INC.  
1375 Piccard Drive, Suite 150  
Rockville, Maryland 20850  
240.683.0300 (P); 240.428.7636 (F)

PERSPECTIVE VIEW

A-15

08/06/2018





1530 FIRST ST. S.W.

PERSPECTIVE VIEW | A-16

1530 FIRST ST. S.W. WASHINGTON DC 20024

Square: 0656 Lot No: 0053 Zone: CG-4



PGN ARCHITECTS, PLLC  
210 7th Street SE - Suite 201  
Washington, DC 20003  
202.822.5995 (P); 202.822.0908 (F)



TM ASSOCIATES INC.  
1375 Piccard Drive, Suite 150  
Rockville, Maryland 20850  
240.683.0300 (P); 240.428.7636 (F)

08/06/2018



1530 FIRST ST. S.W.

1530 FIRST ST. S.W. WASHINGTON DC 20024

Square: 0656 Lot No: 0053 Zone: CG-4



PGN ARCHITECTS, PLLC  
210 7th Street SE - Suite 201  
Washington, DC 20003  
202.822.5995 (P); 202.822.0908 (F)



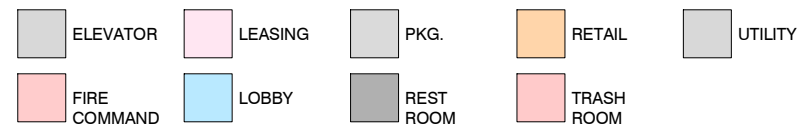
TM ASSOCIATES INC.  
1375 Piccard Drive, Suite 150  
Rockville, Maryland 20850  
240.683.0300 (P); 240.428.7636 (F)

PERSPECTIVE VIEW | A-17

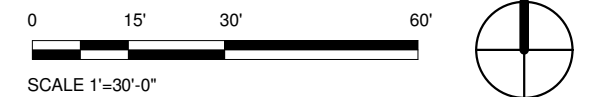
08/06/2018



KEYPLAN



GROSS FLOOR AREA = 11,831 SF  
 LOT OCCUPANCY = 11,831 / 13,206 = 89.59%  
 FAR 7.8



1530 FIRST STREET SW

FIRST FLOOR PLAN A-18

1530 FIRST STREET SW WASHINGTON D.C. 20024

Square: 0656 Lot No: 0053 Zone: CG-4

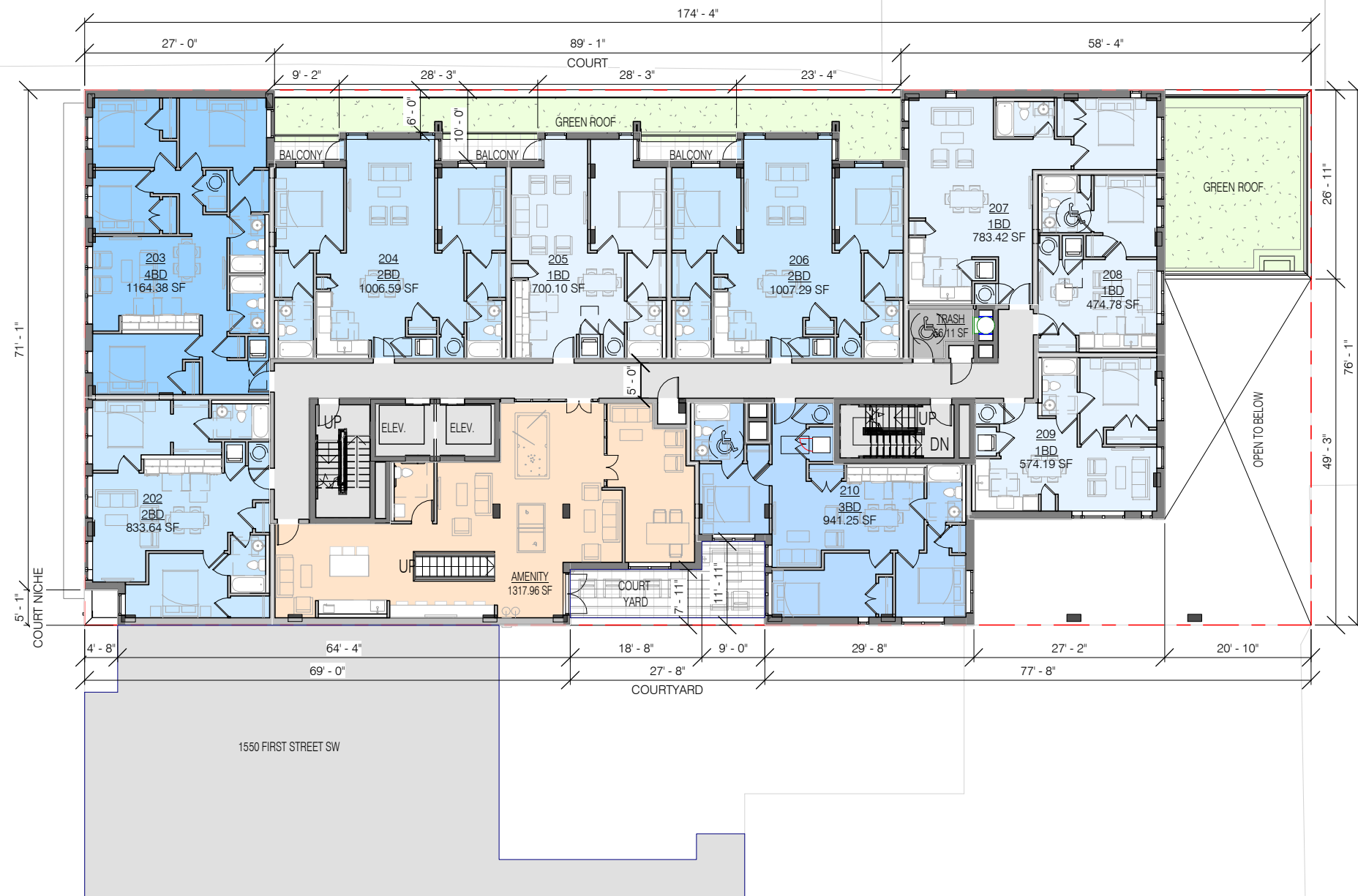


PGN ARCHITECTS, PLLC  
 210 7th Street SE - Suite 201  
 Washington, DC 20003  
 202.822.5995 (P); 202.822.0908 (F)



1375 Piccard Drive, Suite 150  
 Rockville, Maryland 20850  
 240.683.0300 (P); 240.428.7636 (F)

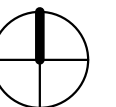
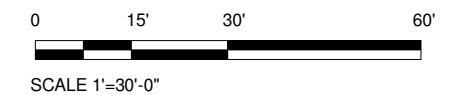
08/03/2018



KEYPLAN

- 1BD
- 2BD
- 3BD
- 4BD
- AMENITY
- TRASH

GROSS FLOOR AREA = 10,277 SF  
 LOT OCCUPANCY = 10,277 / 13,206 = 77.82 %  
 FAR 7.8



1530 FIRST STREET SW

SECOND FLOOR PLAN A-19

1530 FIRST STREET SW WASHINGTON D.C. 20024

Square: 0656 Lot No: 0053 Zone: CG-4

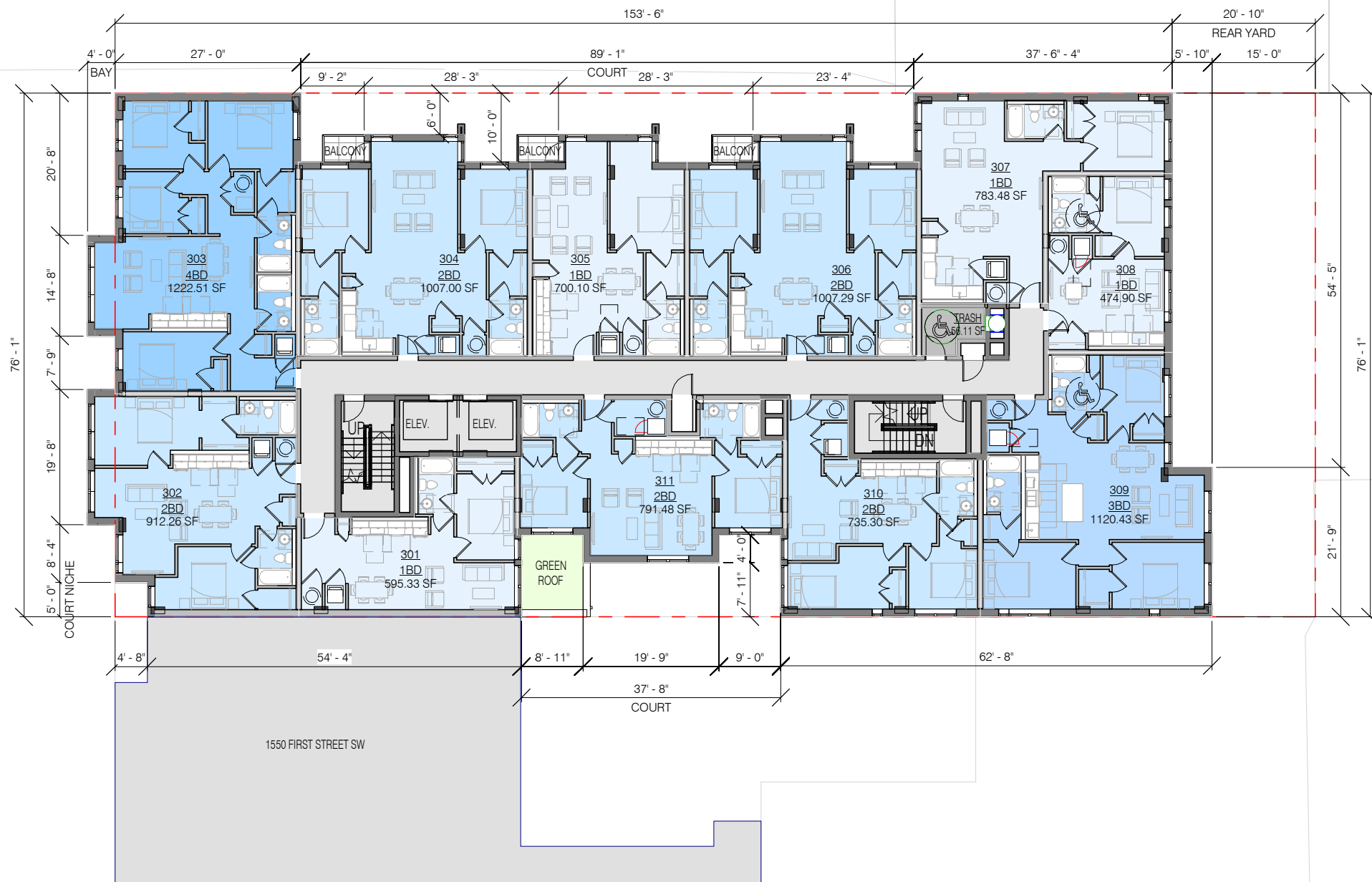


PGN ARCHITECTS, PLLC  
 210 7th Street SE - Suite 201  
 Washington, DC 20003  
 202.822.5995 (P); 202.822.0908 (F)



TM Associates Inc.  
 1375 Piccard Drive, Suite 150  
 Rockville, Maryland 20850  
 240.683.0300 (P); 240.428.7636 (F)

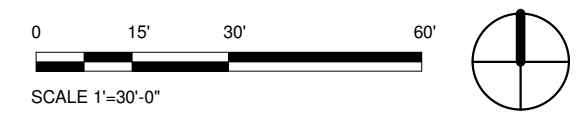
08/03/2018



KEYPLAN

- 1BD
- 2BD
- 3BD
- 4BD
- TRASH

GROSS FLOOR AREA = 10,701 SF  
 LOT OCCUPANCY = 10,701 / 13,206 = 80.70 %  
 FAR 7.8



# 1530 FIRST STREET SW

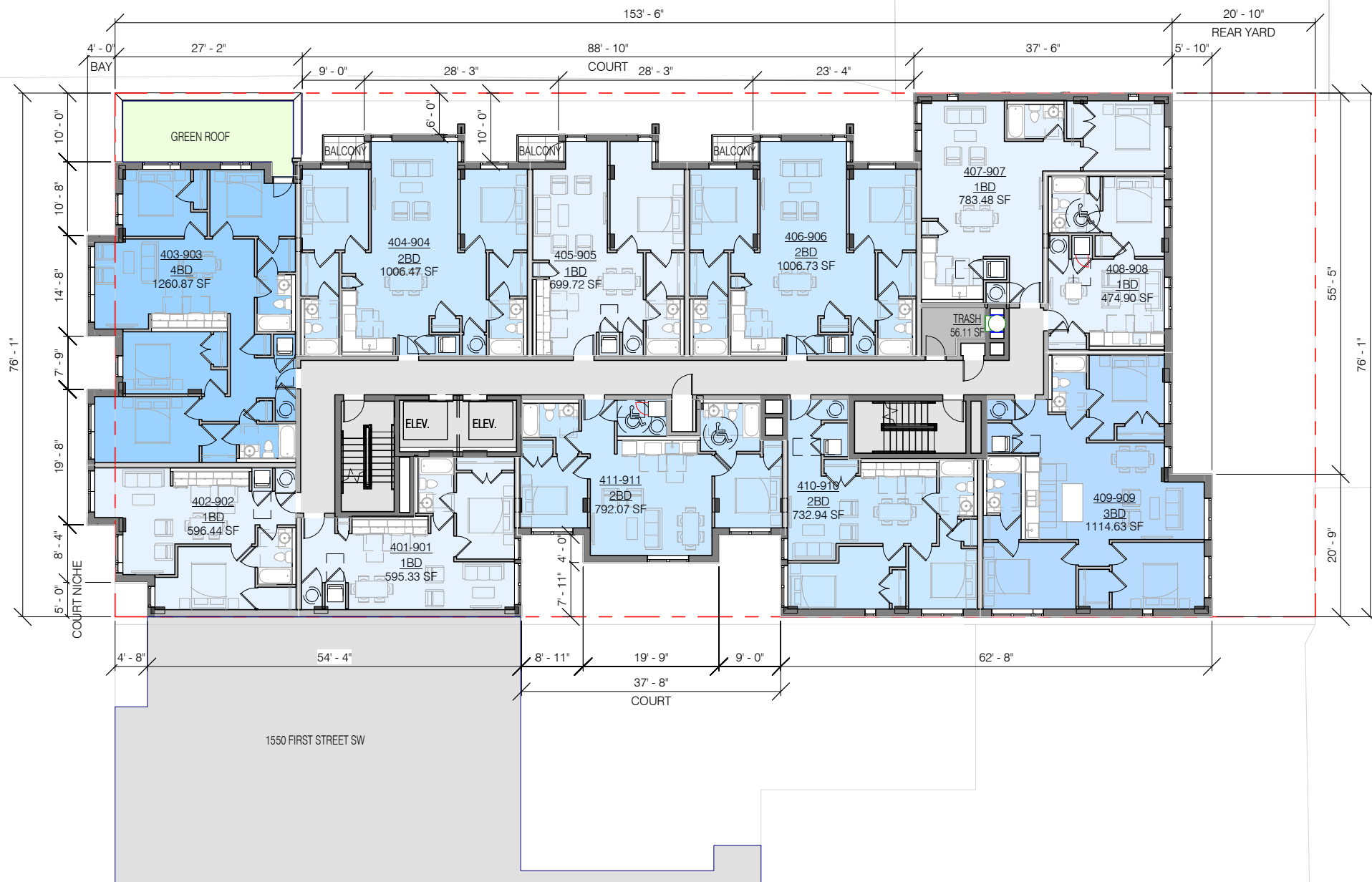
# THIRD FLOOR PLAN | A-20

1530 FIRST STREET SW WASHINGTON D.C. 20024  
 Square: 0656 Lot No: 0053 Zone: CG-4

**PGN ARCHITECTS**  
 PGN ARCHITECTS, PLLC  
 210 7th Street SE - Suite 201  
 Washington, DC 20003  
 202.822.5995 (P); 202.822.0908 (F)

**TM Associates Inc.**  
 1375 Piccard Drive, Suite 150  
 Rockville, Maryland 20850  
 240.683.0300 (P); 240.428.7636 (F)

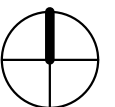
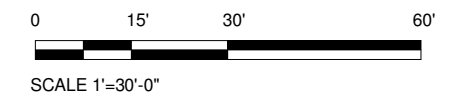
08/06/2018



KEYPLAN

- 1BD
- 2BD
- 3BD
- 4BD
- TRASH

GROSS FLOOR AREA = 10,419 SF  
 LOT OCCUPANCY = 10,419 / 13,206 = 78.90 %  
 FAR 7.8



# 1530 FIRST STREET SW

## FOURTH TO NINTH FLOOR PLAN | A-21

1530 FIRST STREET SW WASHINGTON D.C. 20024

Square: 0656 Lot No: 0053 Zone: CG-4

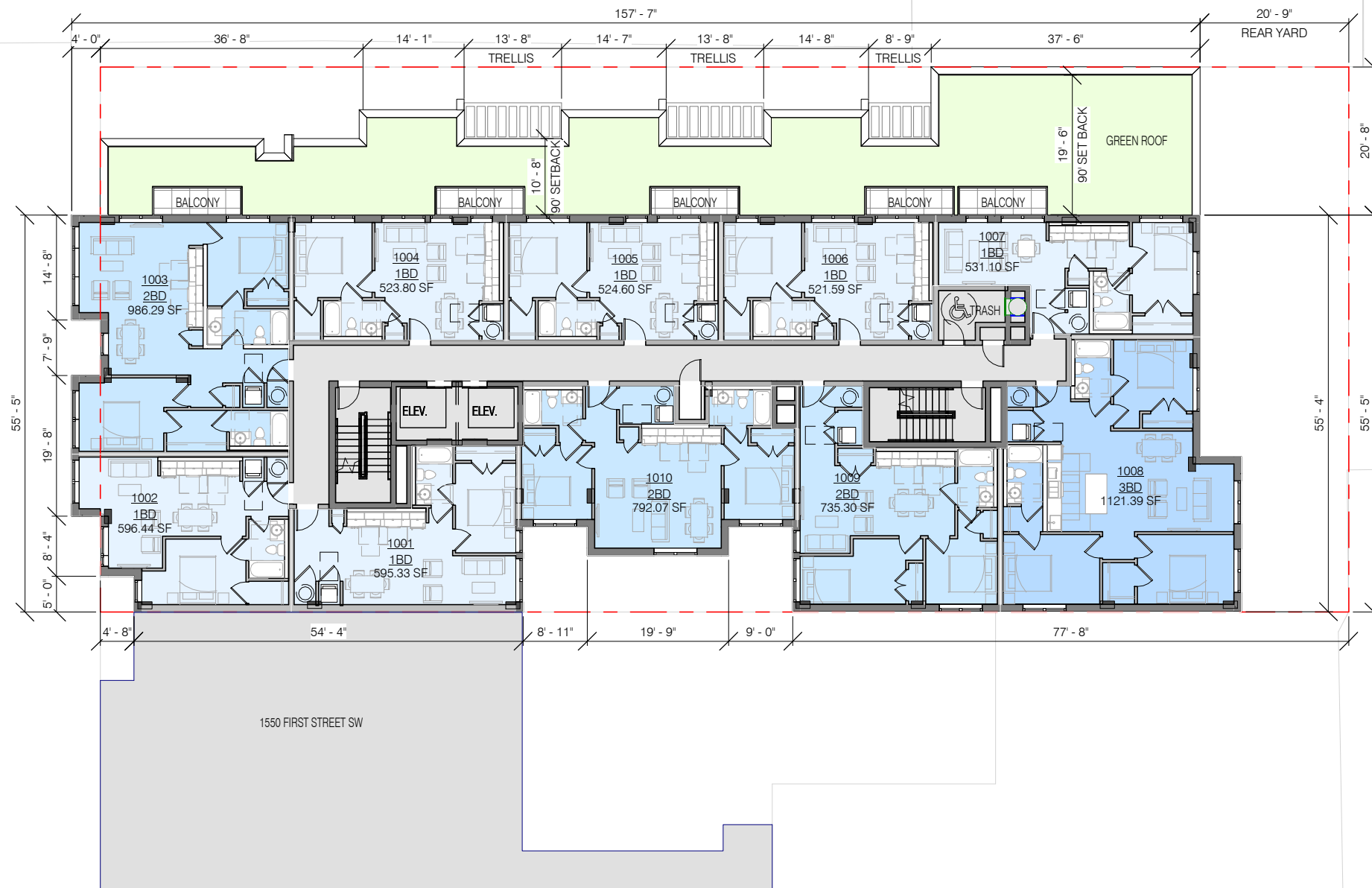


PGN ARCHITECTS, PLLC  
 210 7th Street SE - Suite 201  
 Washington, DC 20003  
 202.822.5995 (P); 202.822.0908 (F)



1375 Piccard Drive, Suite 150  
 Rockville, Maryland 20850  
 240.683.0300 (P); 240.428.7636 (F)

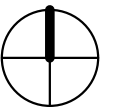
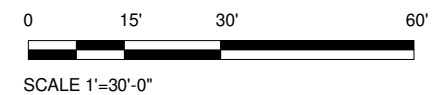
08/06/2018



KEYPLAN

- 1BD
- 2BD
- 3BD

GROSS FLOOR AREA = 8,238 SF  
 LOT OCCUPANCY = 8,238 / 13,206 = 63.21 %  
 FAR 7.8



1530 FIRST STREET SW

TENTH FLOOR PLAN | A-22

1530 FIRST STREET SW WASHINGTON D.C. 20024

Square: 0656 Lot No: 0053 Zone: CG-4

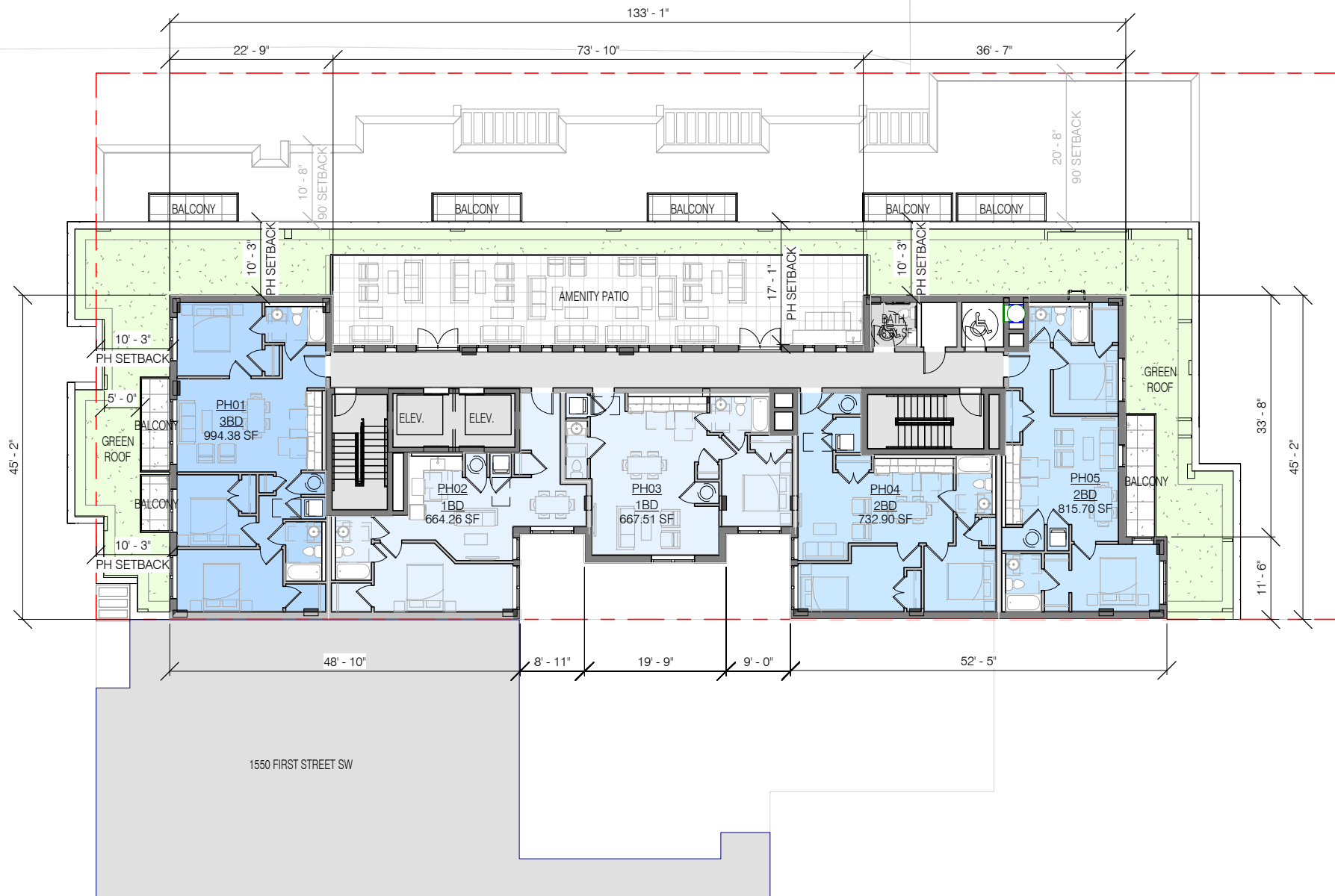


PGN ARCHITECTS, PLLC  
 210 7th Street SE - Suite 201  
 Washington, DC 20003  
 202.822.5995 (P); 202.822.0908 (F)



1375 Piccard Drive, Suite 150  
 Rockville, Maryland 20850  
 240.683.0300 (P); 240.428.7636 (F)

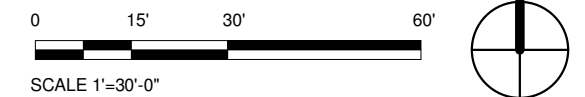
08/06/2018



KEYPLAN

- 1BD
- 2BD
- 3BD
- BATH.

GROSS FLOOR AREA = 5,238 SF  
 LOT OCCUPANCY = 5,238 / 13,206 = 40.19 %



# 1530 FIRST STREET SW

## PENTHOUSE FLOOR PLAN A-23

1530 FIRST STREET SW WASHINGTON D.C. 20024

Square: 0656 Lot No: 0053 Zone: CG-4



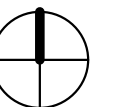
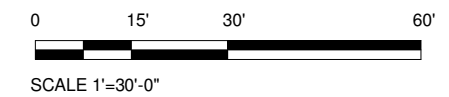
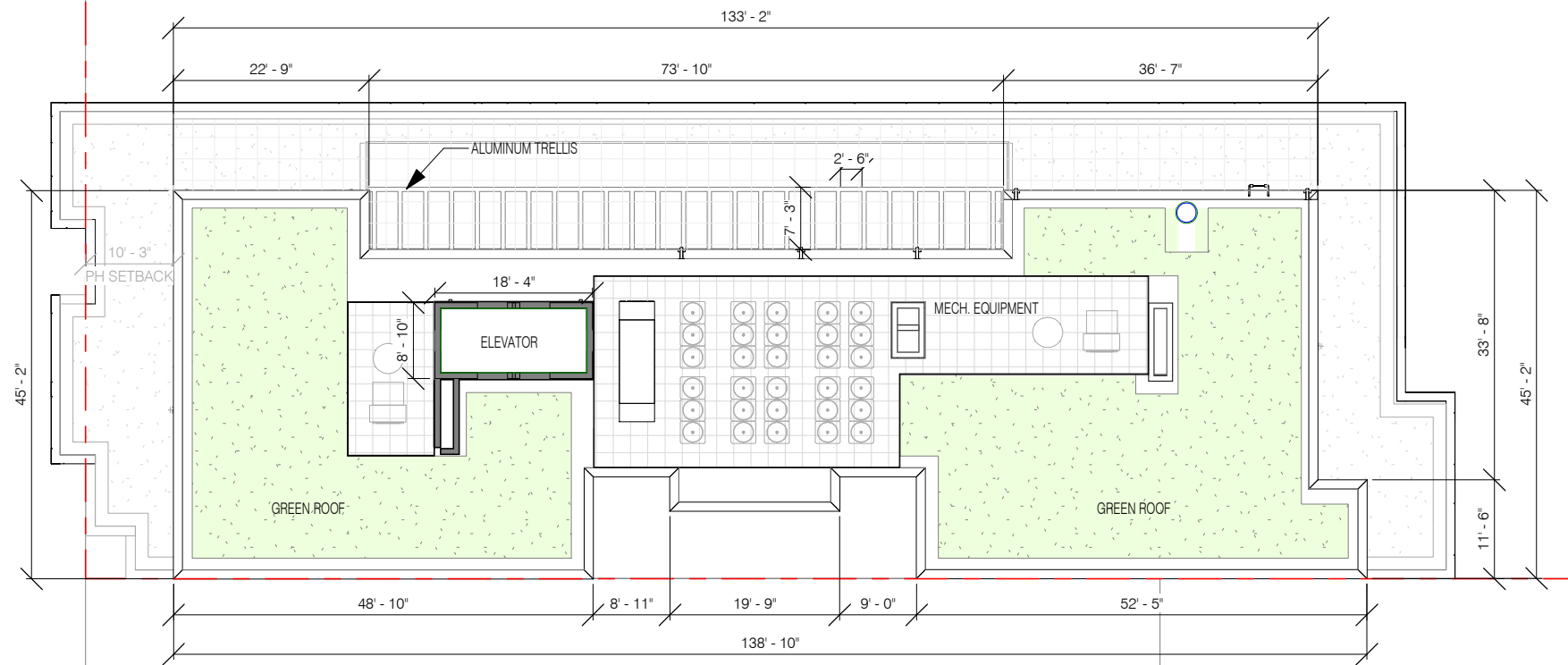
PGN ARCHITECTS, PLLC  
 210 7th Street SE - Suite 201  
 Washington, DC 20003  
 202.822.5995 (P); 202.822.0908 (F)



1375 Piccard Drive, Suite 150  
 Rockville, Maryland 20850  
 240.683.0300 (P); 240.428.7636 (F)

08/06/2018





1530 FIRST STREET SW

1530 FIRST STREET SW WASHINGTON D.C. 20024

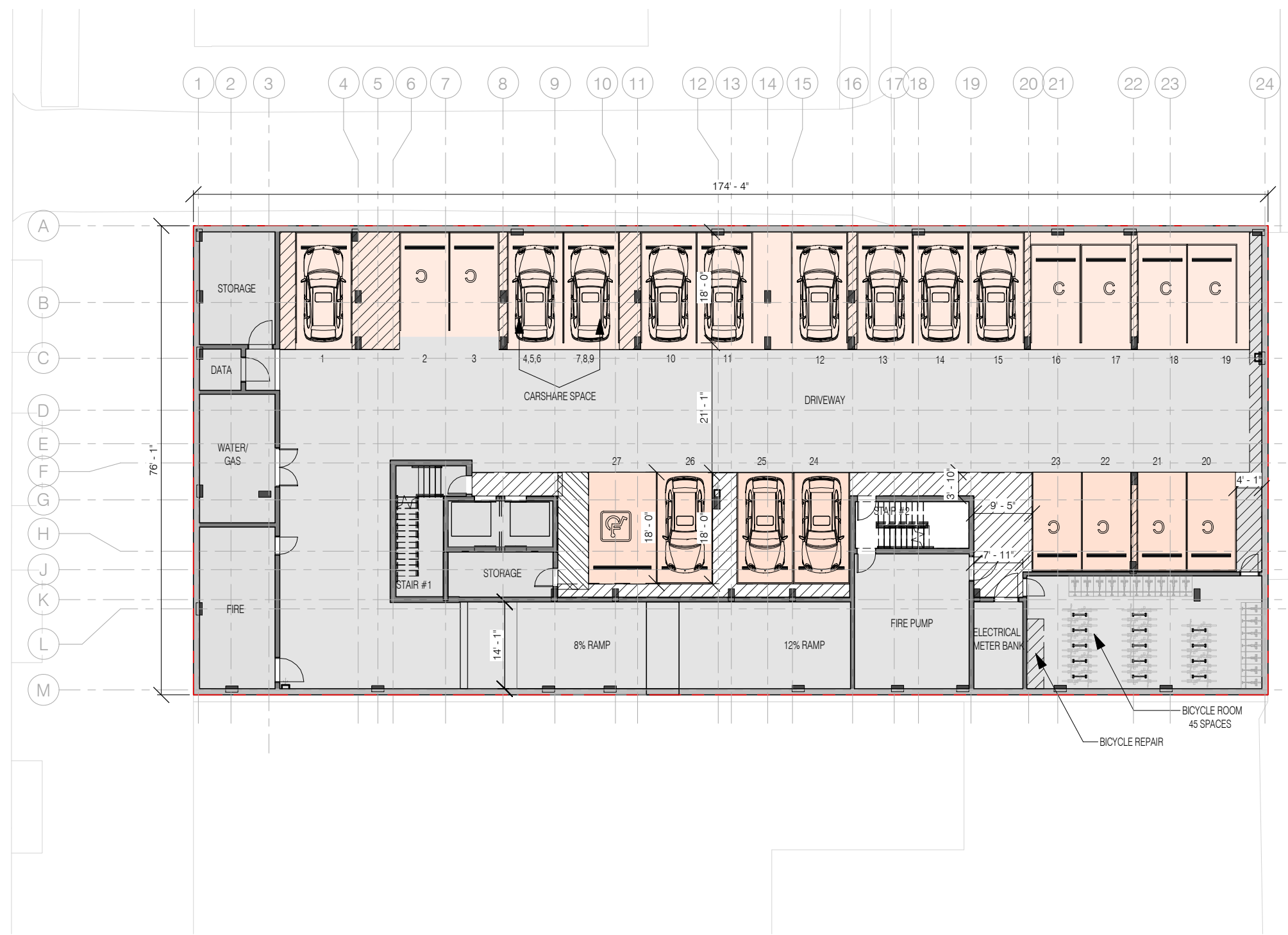
Square: 0656 Lot No: 0053 Zone: CG-4



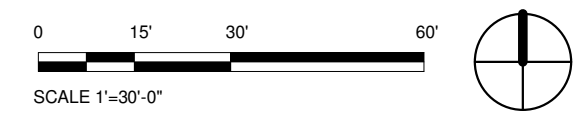
PGN ARCHITECTS, PLLC  
210 7th Street SE - Suite 201  
Washington, DC 20003  
202.822.5995 (P); 202.822.0908 (F)



1375 Piccard Drive, Suite 150  
Rockville, Maryland 20850  
240.683.0300 (P); 240.428.7636 (F)



NUMBER OF PARKING	
COMPACT (8X16)	10
STANDARD (8X19)	10
CARSHARE	6 (2*3)
ADA VAN (11X19)	1
TOTAL	27
NUMBER OF BIKES	
REQUIRED	101/3 = 34
PROVIDE	45



# 1530 FIRST STREET SW

# GARAGE FLOOR PLAN A-25

1530 FIRST STREET SW WASHINGTON D.C. 20024  
 Square: 0656 Lot No: 0053 Zone: CG-4

**PGN ARCHITECTS**  
 PGN ARCHITECTS, PLLC  
 210 7th Street SE - Suite 201  
 Washington, DC 20003  
 202.822.5995 (P); 202.822.0908 (F)

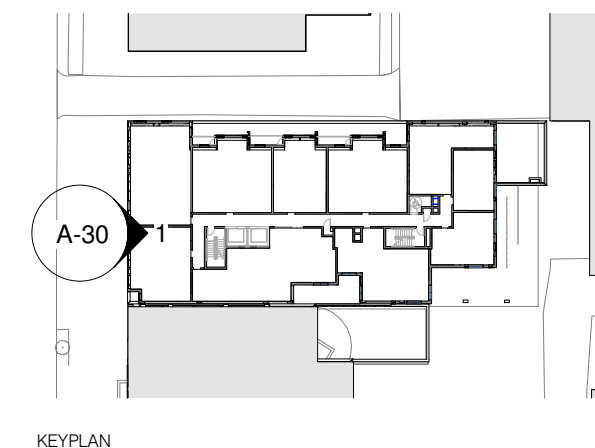
**TM Associates Inc.**

1375 Piccard Drive, Suite 150  
 Rockville, Maryland 20850  
 240.683.0300 (P); 240.428.7636 (F)

08/06/2018



① RENDERED WEST ELEVATION  
1/32" = 1'-0"



1530 FIRST ST. S.W.

1530 FIRST ST. S.W. WASHINGTON DC 20024

Square: 0656 Lot No: 0053 Zone: CG-4

**PGN** ARCHITECTS  
PGN ARCHITECTS, PLLC  
210 7th Street SE - Suite 201  
Washington, DC 20003  
202.822.5995 (P); 202.822.0908 (F)

**TM Associates Inc.**

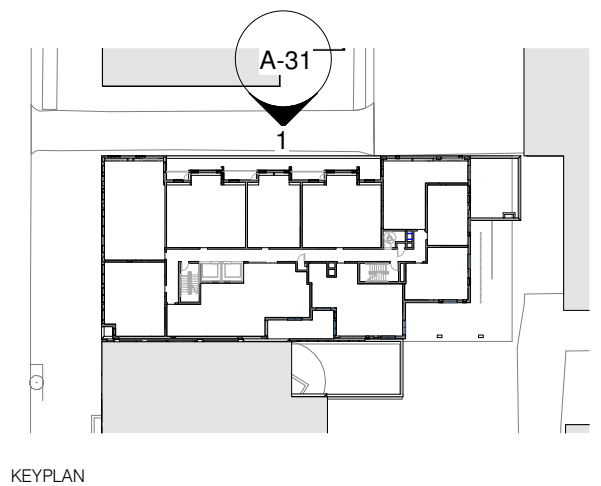
TM ASSOCIATES INC.  
1375 Piccard Drive, Suite 150  
Rockville, Maryland 20850  
240.683.0300 (P); 240.428.7636 (F)

WEST RENDERED ELEVATION | A-26

08/06/2018



1 RENDERED NORTH ELEVATION  
1/32" = 1'-0"



KEYPLAN

1530 FIRST ST. S.W.

1530 FIRST ST. S.W. WASHINGTON DC 20024

Square: 0656 Lot No: 0053 Zone: CG-4



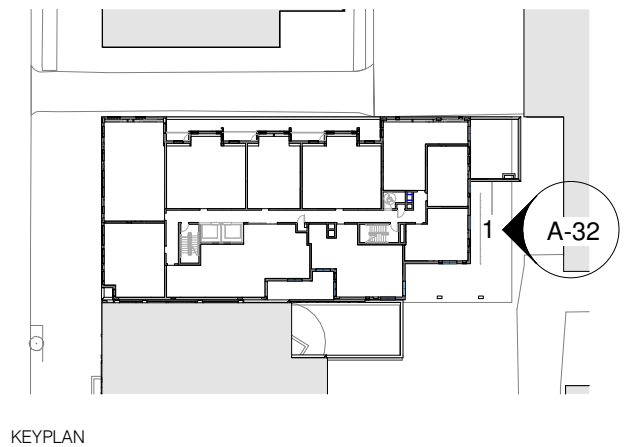
PGN ARCHITECTS, PLLC  
210 7th Street SE - Suite 201  
Washington, DC 20003  
202.822.5995 (P); 202.822.0908 (F)



TM ASSOCIATES INC.  
1375 Piccard Drive, Suite 150  
Rockville, Maryland 20850  
240.683.0300 (P); 240.428.7636 (F)



① RENDERED EAST ELEVATION  
1/32" = 1'-0"



KEYPLAN

1530 FIRST ST. S.W.

1530 FIRST ST. S.W. WASHINGTON DC 20024

Square: 0656 Lot No: 0053 Zone: CG-4



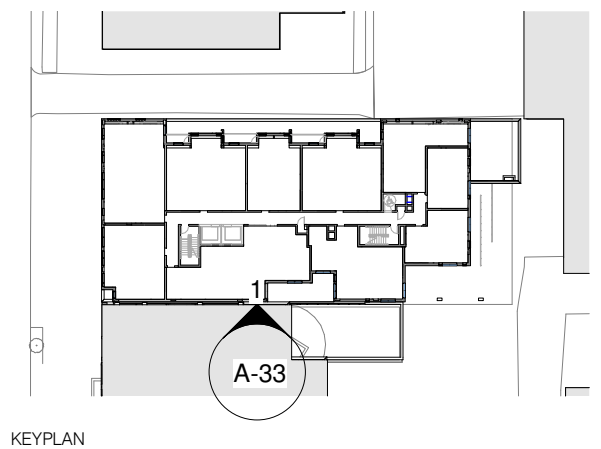
PGN ARCHITECTS, PLLC  
210 7th Street SE - Suite 201  
Washington, DC 20003  
202.822.5995 (P); 202.822.0908 (F)



TM ASSOCIATES INC.  
1375 Piccard Drive, Suite 150  
Rockville, Maryland 20850  
240.683.0300 (P); 240.428.7636 (F)



① RENDERED SOUTH ELEVATION  
1/32" = 1'-0"



1530 FIRST ST. S.W.

1530 FIRST ST. S.W. WASHINGTON DC 20024

Square: 0656 Lot No: 0053 Zone: CG-4



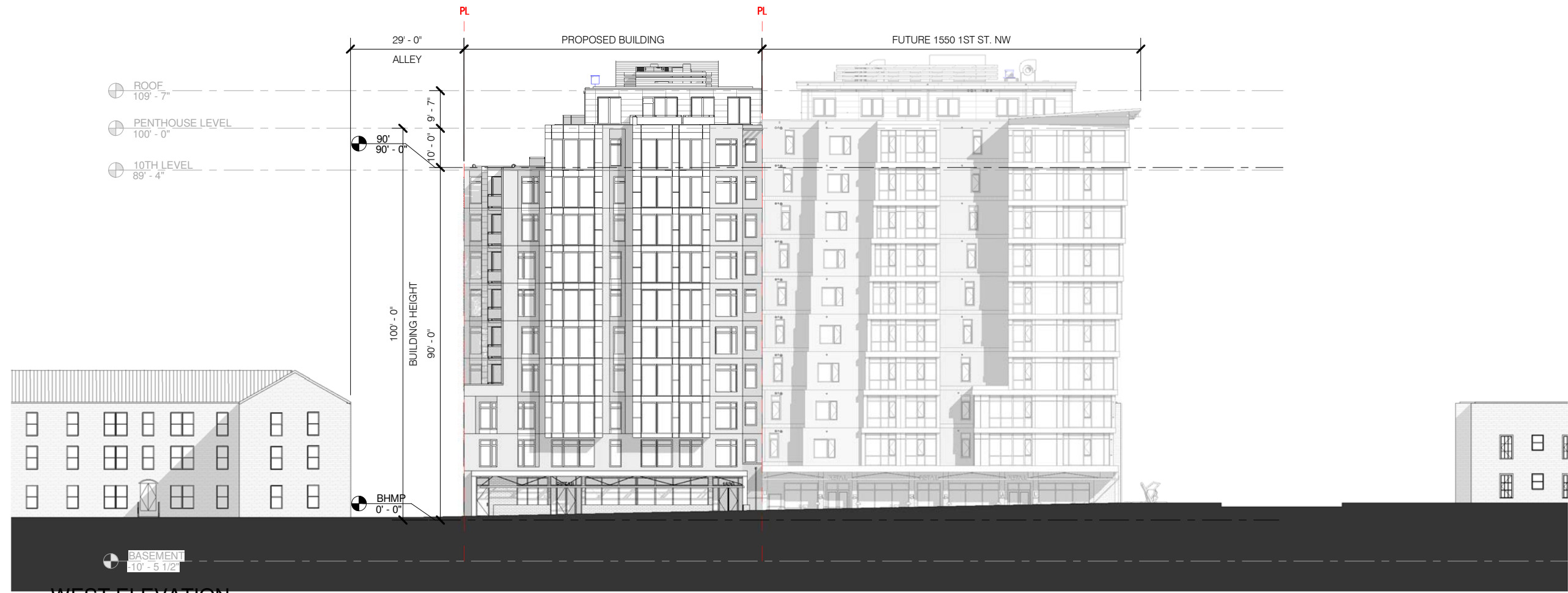
PGN ARCHITECTS, PLLC  
210 7th Street SE - Suite 201  
Washington, DC 20003  
202.822.5995 (P); 202.822.0908 (F)



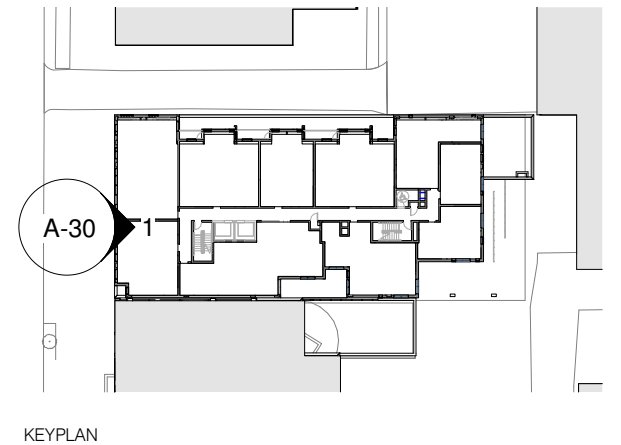
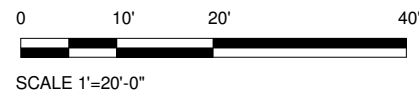
TM ASSOCIATES INC.  
1375 Piccard Drive, Suite 150  
Rockville, Maryland 20850  
240.683.0300 (P); 240.428.7636 (F)

SOUTH RENDERED ELEVATION | A-29

08/06/2018



1 WEST ELEVATION  
1" = 30'-0"



KEYPLAN

1530 FIRST ST. S.W.

1530 FIRST ST. S.W. WASHINGTON DC 20024

Square: 0656 Lot No: 0053 Zone: CG-4



PGN ARCHITECTS, PLLC  
210 7th Street SE - Suite 201  
Washington, DC 20003  
202.822.5995 (P); 202.822.0908 (F)



TM ASSOCIATES INC.  
1375 Piccard Drive, Suite 150  
Rockville, Maryland 20850  
240.683.0300 (P); 240.428.7636 (F)

WEST ELEVATION | A-30

08/06/2018